

NOTES:  
 1. DO NOT SCALE ANY ITEMS OR INFORMATION FROM THIS DRAWING.

- REDLINE BOUNDARY
- LE 2.2 PROPOSED WOODLAND EDGE  
PLANTING: Mix WE1 See Plant Schedule
- LE 4.3 PROPOSED HEDGEROW  
PLANTING: Mix H1 See Plant schedule
- TREE PROTECTION FENCING.  
Reference Barton Hyett Arboricultural Impact Assessment Tree Protection Plan BHA\_1132\_02
- LE 5.1 PROPOSED TREE. See Plant Schedule
- EXISTING TREES TO BE REMOVED.  
Reference Barton Hyett Arboricultural Impact Assessment Tree Retention and Removal Plan BHA\_1132\_02.
- EXISTING VEGETATION TO BE RETAINED AND PROTECTED.

- ENVIRONMENTAL FUNCTIONS**  
 For full descriptions refer to the Landscape and Environmental Management Plan (LEMP)
- EFB Landscape Integration
  - efd Nature Conservation and Biodiversity
  - efe Visual Amenity
- LANDSCAPE ELEMENTS**  
 For full descriptions refer to the Landscape and Environmental Management Plan (LEMP)
- LE 2.2 Woodland Edge
  - LE 4.3 Native species hedgerow
  - LE 5.1 Individual Trees

- PLANTING NOTES:**
- Planting offsets:**  
 The following planting constraints shall apply to all planting plots:
- Shrub species within woodland edge and woodland planting mixes shall not be planted within 4.5m of the carriageway edge
  - Medium size trees (tree girth less than 450mm) no closer than 7m (i.e. Malus sp, Prunus sp)
  - Large climax trees (tree girth greater than 600mm) not within 9m (i.e. Quercus sp, Fagus sp.)
- Indicative planting offsets are shown on the drawing as guidance but these shall be confirmed by the contractor at time of implementation.

No planting shall be undertaken within 1.5m of the utilities, drainage runs/ditches or highway boundary fencing

**Plant spacing:**  
 Plants spacing shall be at 2.0m centres as indicated in the Plant schedules. Tree species, i.e. Alnus glutinosa, Betula pendula, Prunus avium and Sorbus aucuparia shall be randomly distributed within the plot no closer than 6m spacing from other tree species as listed.

Plot	P 1/2	P 1/4
Area/Length	8.5	31
Plant/m	7	8
	H1	G1
	60	248

Groundcover Mix (G1) : LE3.3

Botanical Name	Common Name	% of the mix	H1	G1
<i>Acer campestre</i>	Field Maple	10.0%	6	0
<i>Carpinus betulus</i>	Hornbeam	15.0%	9	0
<i>Corylus avellana</i>	Hazel	10.0%	6	0
<i>Crataegus monogyna</i>	Hawthorn	55.0%	33	0
<i>Ilex aquifolium</i>	Holly	10.0%	6	0
<i>Hedera helix 'Hibernica'</i>	Ivy	100.0%	0	248
			54	248

Hedging to be planted in species groups of 3 to 5 as a double staggered row 450mm apart at 7 plants per lin m (300mm ctrs).

Woodland Edge Mix (WE1) : LE2.2

Botanical Name	Common Name	% of the mix	WE1	WE1
<i>Alder glutinosa</i>	Alder	11.0%	2	3
<i>Corylus avellana</i>	Hazel	12.0%	2	4
<i>Crataegus monogyna</i>	Hawthorn	15.0%	2	4
<i>Ilex aquifolium</i>	Holly	8.0%	1	3
<i>Malus sylvestris (Fthd)</i>	Crab Apple	8.0%	1	3
<i>Prunus avium</i>	Bird Cherry	8.0%	1	3
<i>Betula pendula</i>	Silver Birch	10.0%	2	3
<i>Salix cinerea</i>	Grey Willow	8.0%	1	3
<i>Sorbus aucuparia</i>	Mountain Ash	10.0%	2	3
<i>Viburnum opulus</i>	Guelder Rose	10.0%	2	3
		100.0%	16	32

Plant stock to be planted at 1.5m centres in species groups of 3 to 5. Feathered Malus sylvestris to be placed as single specimens across the plot.

Individual Trees : LE 5.1

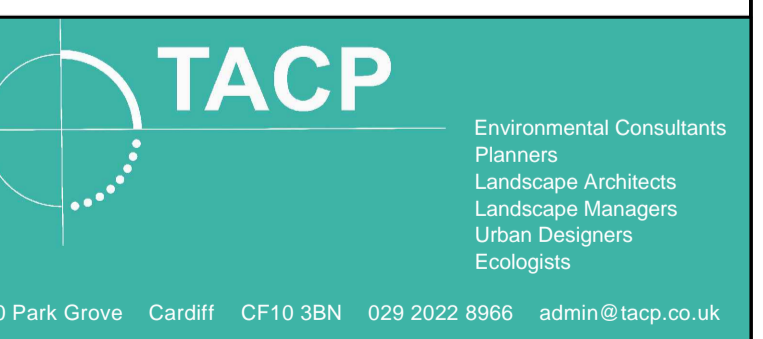
Botanical Name	Common Name	Size	Spec	No
<i>Acer campestre</i> 'Louisa Red Shine'	Field Maple	8-10cm girth	Std	5

**Plant stock specification**

Botanical Name	Common Name	Specification
<i>Acer campestre</i>	Field Maple	1+1 or 1/1 60-80cm Bareroot
<i>Alnus glutinosa</i>	Alder	1+1 or 1/1 40-60cm Bareroot
<i>Betula pendula</i>	Silver Birch	1+1 or 1/1 40-50cm Bareroot
<i>Carpinus betulus</i>	Hornbeam	1+1 or 1/1 60-80cm Bareroot
<i>Corylus avellana</i>	Hazel	1+1 or 1/1 40-60cm Bareroot
<i>Crataegus monogyna</i>	Hawthorn	1+1 or 1/1 40-60cm Bareroot
<i>Ilex aquifolium</i>	Holly	20-30cm CG 9cm pot
<i>Malus sylvestris (Fthd)</i>	Crab Apple	2x 175-200cm Bareroot 5 breaks
<i>Prunus avium</i>	Bird Cherry	1+1 or 1/1 40-60cm Bareroot
<i>Salix cinerea</i>	Grey Willow	0/1 60-80cm Bareroot 2 breaks
<i>Sorbus aucuparia</i>	Mountain Ash	1+1 or 1/1 40-60cm Bareroot
<i>Viburnum opulus</i>	Guelder Rose	1+2 or 1/2 60-80cm Bareroot 3 breaks
<i>Hedera helix 'Hibernica'</i>	Ivy	30-40cm CG, 1L pot, several shoots

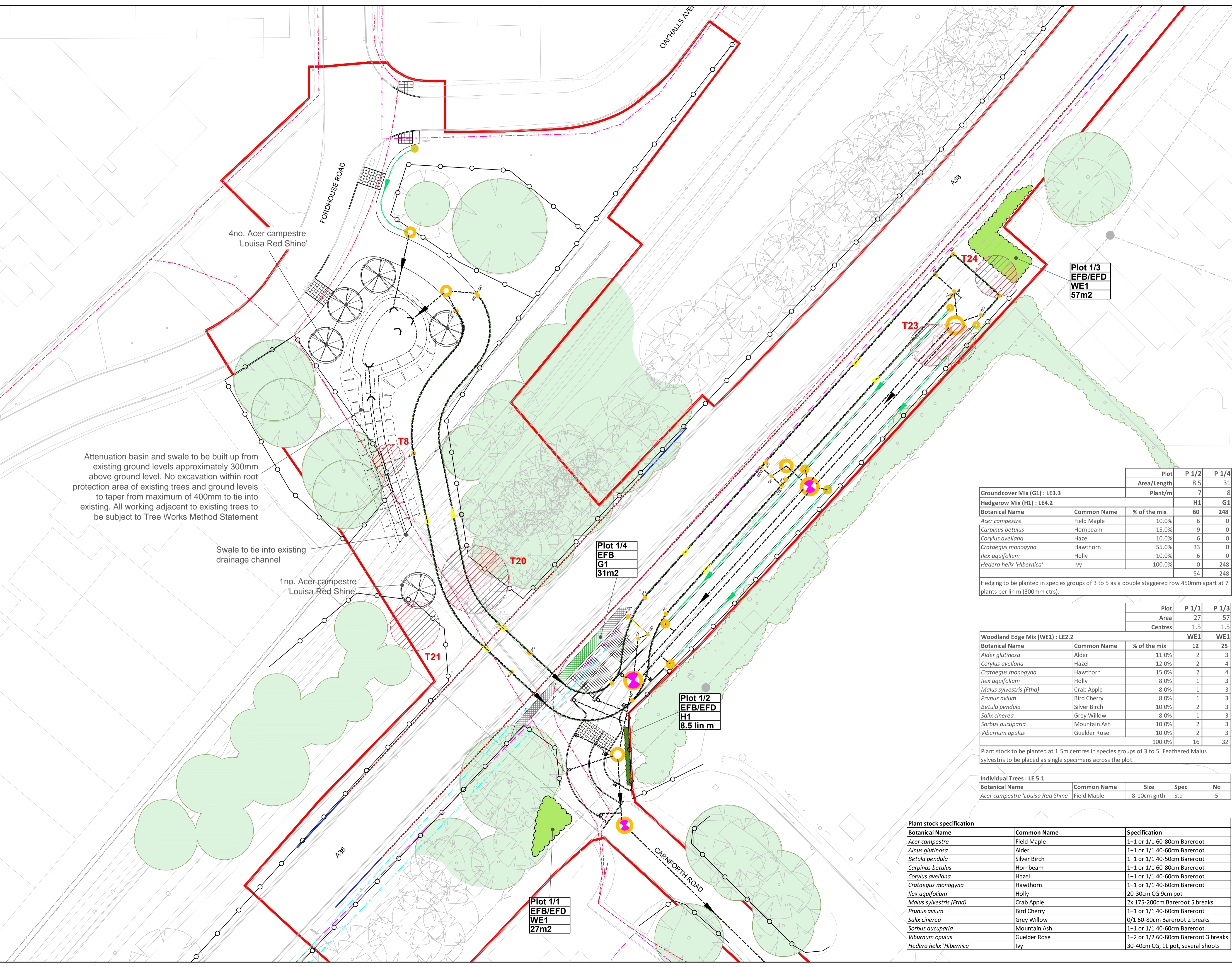
S3: FOR REVIEW AND COMMENT

BURROUGHS



BREP: SCHEME 5  
 LANDSCAPE PROPOSALS  
 PLANTING

Scale @ A1: 1:100  
 Dwg No: 61014-DWG-LP-Sch5-001-P7-S3



4no. *Acer campestre* 'Louisa Red Shine'

Attenuation basin and swale to be built up from existing ground levels approximately 300mm above ground level. No excavation within root protection area of existing trees and ground levels to taper from maximum of 400mm to tie into existing. All working adjacent to existing trees to be subject to Tree Works Method Statement

Swale to tie into existing drainage channel

1no. *Acer campestre* 'Louisa Red Shine'

Plot 1/4  
 EFB  
 G1  
 31m<sup>2</sup>

Plot 1/2  
 EFB/efd  
 H1  
 8.5 lin m

Plot 1/1  
 EFB/efd  
 WE1  
 27m<sup>2</sup>

Plot 1/3  
 EFB/efd  
 WE1  
 57m<sup>2</sup>

C:\Users\user\OneDrive\Documents\61014-DWG-LP-Sch5-001-P7-S3.dwg - 2022-08-10 10:00:00